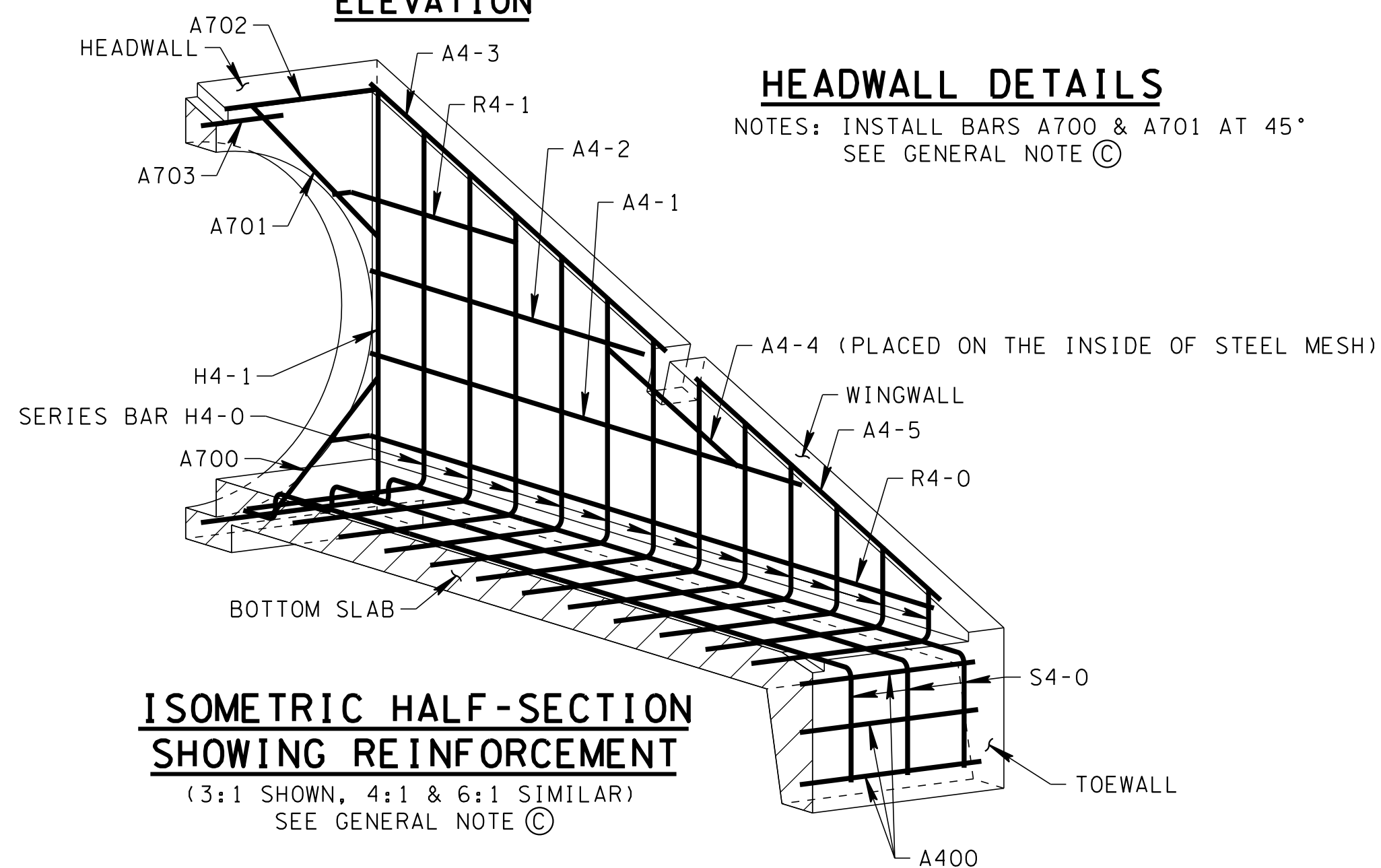
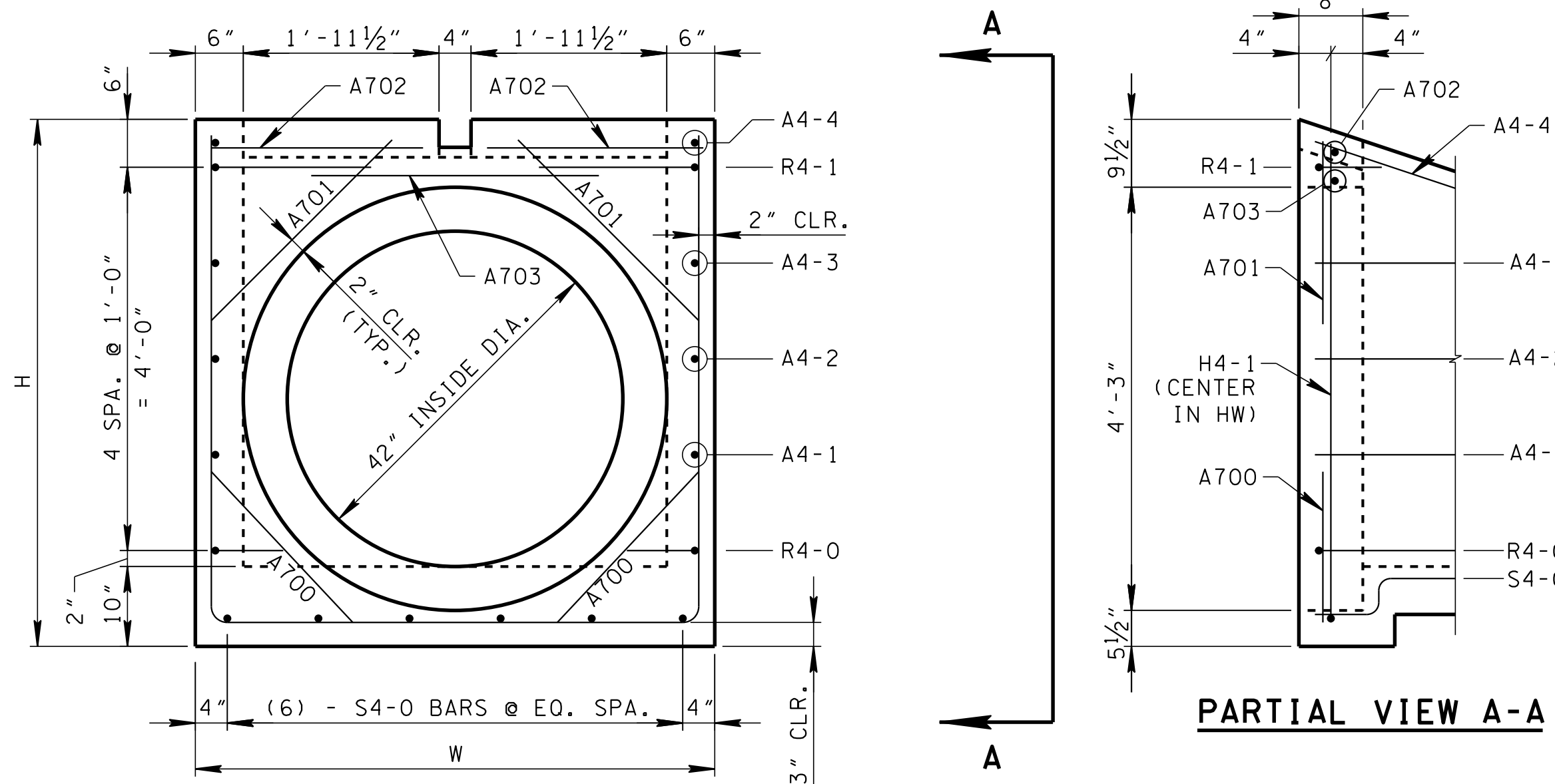


- GENERAL NOTES**
- (A) DRAWING TO BE USED FOR ALL CAST-IN-PLACE AND ALL PRECAST 42" CONCRETE ENDWALLS (TYPE "U") FOR CROSS DRAINS ONLY. "U" ENDWALL TO BE PLACED AT 90° SKEW TO CENTERLINE. SEE STD. DWG. D-PE-99 FOR SKEWED CONNECTION DETAIL WHEN CROSS DRAIN IS NOT PERPENDICULAR TO CENTERLINE. CAST-IN-PLACE CONCRETE ENDWALL SHALL BE CONSTRUCTED IN ACCORDANCE WITH STANDARD SPECIFICATIONS, SECTION 611 AND/OR SPECIAL PROVISIONS.
 - (B) SEE STD. DWG. D-PE-42B FOR BILL OF STEEL & PRECAST NOTES.
 - (C) "-" IN BAR DESIGNATION REPRESENTS 3, 4 OR 6 FOR 3:1, 4:1 OR 6:1 SLOPES, RESPECTIVELY.
 - (D) SPLICING OF REINFORCEMENT IS ACCEPTABLE PROVIDED THAT A MINIMUM 21" SPLICE LENGTH IS USED.
 - (E) TOEWALL BACK SLOPE MAY BE CONSTRUCTED VARIABLE FROM VERTICAL UP TO 15°.
 - (F) PAYMENT WILL BE MADE UNDER:
 - 611-07.66 42IN ENDWALL (CROSS DRAIN) 3:1 EACH
 - 611-07.67 42IN ENDWALL (CROSS DRAIN) 4:1 EACH
 - 611-07.68 42IN ENDWALL (CROSS DRAIN) 6:1 EACH
 - (G) THE CONTRACTOR MAY ELECT TO SUBSTITUTE AN APPROVED ALTERNATIVE DESIGN.
 - (H) DIMENSIONAL AND REINFORCING TOLERANCES WILL BE AS SHOWN IN STANDARD OPERATING PROCEDURE (SOP) 5-3.



| DIMENSIONS AND QUANTITIES FOR ONE ENDWALL 42" PIPE | | | | | | | | | | | |
|--|-----------------------------|----------------|----------------|----------------|----------------|---------|----------------------------------|-------------|-------------------------|----------------------|----------------------|
| SLOPE | CONCRETE ENDWALL DIMENSIONS | | | | | | STRUCTURAL STEEL PIPE DIMENSIONS | | ESTIMATED QUANTITIES | | |
| | H | L ₁ | L ₂ | L ₃ | L ₄ | W | LG | WG | CLASS "A" CONC. CU. YD. | STEEL BAR REINF. LB. | STRUCTURAL STEEL LB. |
| | | | | | | | | | | | |
| 3:1 | 5' - 6" | 13' - 8" | 14' - 4 7⁄8" | 7' - 4 1⁄2" | - | 5' - 3" | 14' - 3 3⁄4" | 1 @ 5' - 3" | 3.03 | 261 | 148 |
| 4:1 | | 18' - 0" | 18' - 6 5⁄8" | 9' - 2 7⁄8" | - | | 18' - 5 3⁄4" | 1 @ 5' - 3" | 3.85 | 327 | 180 |
| 6:1 | | 26' - 8" | 27' - 0 3⁄8" | 9' - 1" | 9' - 1" | | 26' - 11 7⁄8" | 2 @ 5' - 3" | 5.50 | 464 | 284 |

NOTE: SEE STD. DWG. D-PE-99 FOR STRUCTURAL STEEL PIPE DIMENSIONS LG & WG.

MINOR REVISION -- FHWA APPROVAL NOT REQUIRED.

STATE OF TENNESSEE
DEPARTMENT OF TRANSPORTATION

42" CONCRETE ENDWALL
CROSS DRAIN WITH
STEEL PIPE GRATE
(FOR 3:1, 4:1 & 6:1 SLOPES)

NOT TO SCALE

3-01-12

D-PE-42A